

When downloading the eFEP Excel part 2 and using 'Save As' file type Excel 97-2003 as requested, I get a warning that I cannot save to this file format. How can I save the Excel part 2 to my PC?

Whenever you save the Excel part 2 template, either at download or subsequently on your local PC, a prompt appears to ensure the file is saved as a file type that is compatible with the Natural England computer upload process. (Fig1)

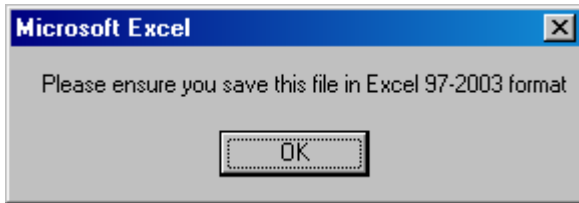


Fig1

If you have **Excel 2003** on your PC, the default file type of "Microsoft Office Excel Workbook" should be used, as shown in Fig2

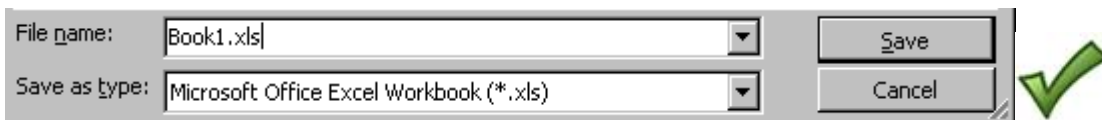


Fig2

In **Excel 2003**, the file type for Excel 97-2003 also includes parameters for Excel 5.0 and 95, as shown in Fig3

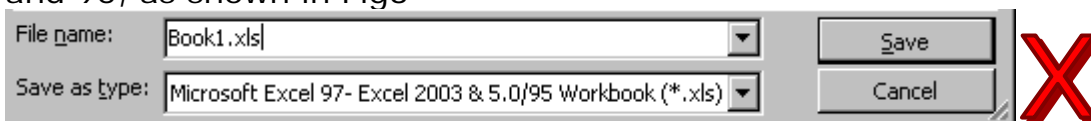


Fig3

This file type **should not be used** as it is not compatible and will result in the following warning:

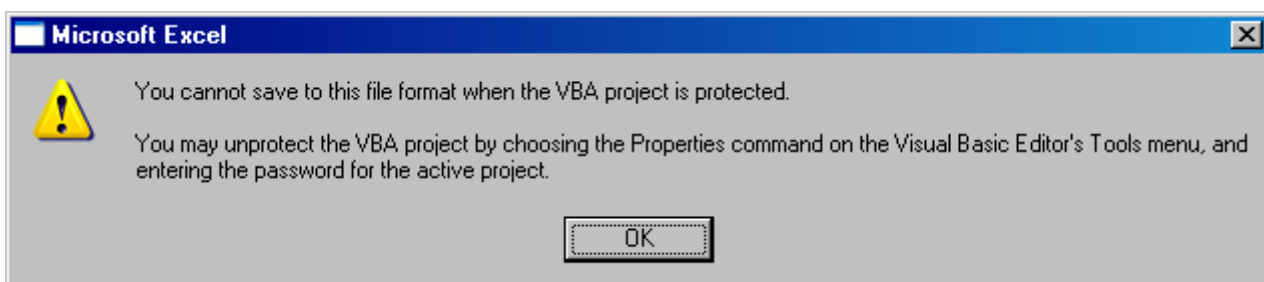


Fig4

If you are using **Excel 2007**, should have a choice of Excel 97-2003 file type which will allow you to "save as" without warnings.

Screenshots for Vista are shown below.

